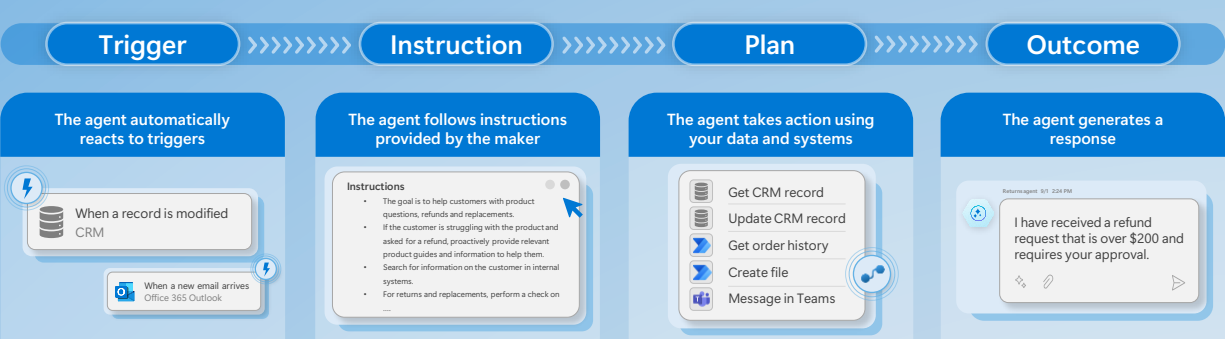
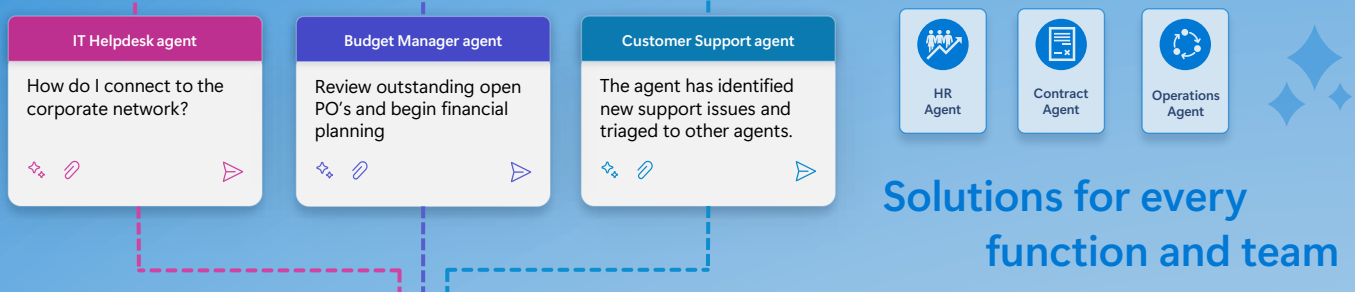
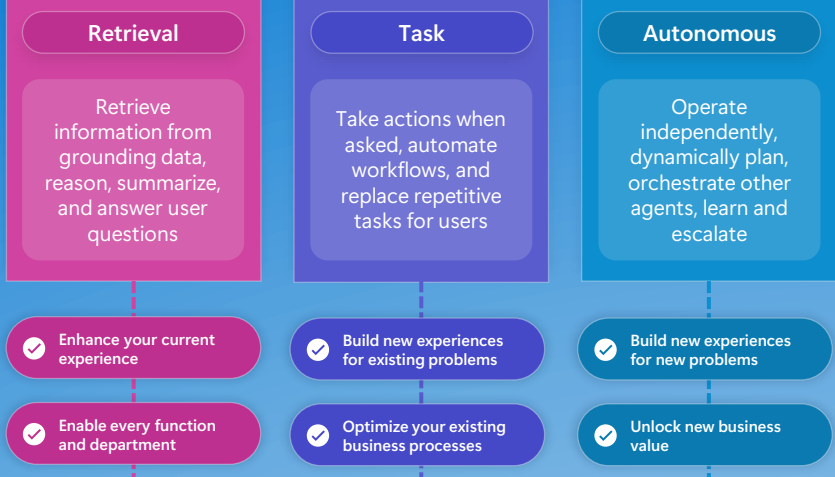


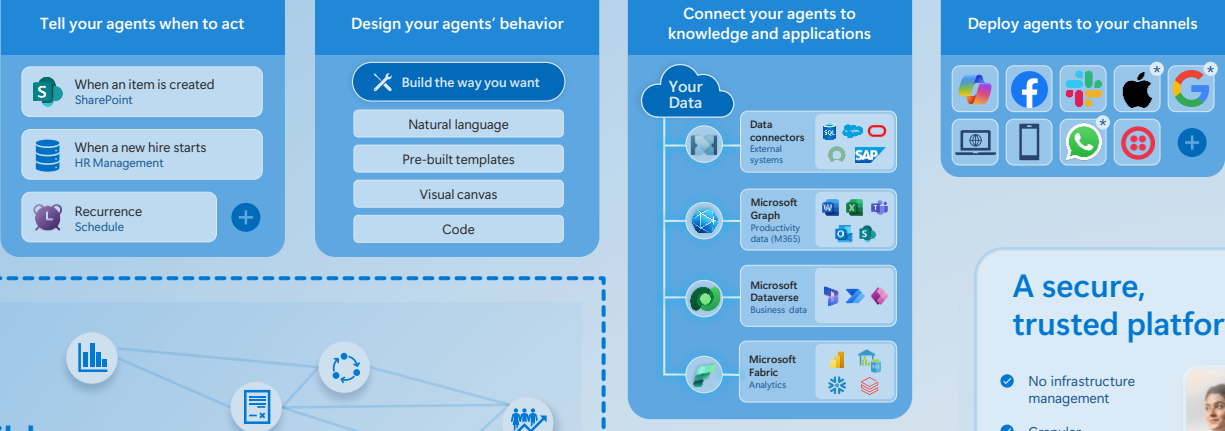
What is an agent?

An agent uses AI to automate and execute business processes, working alongside or on behalf of a person, team or organization.

Agents vary in levels of complexity and capabilities depending on your need



Orchestration

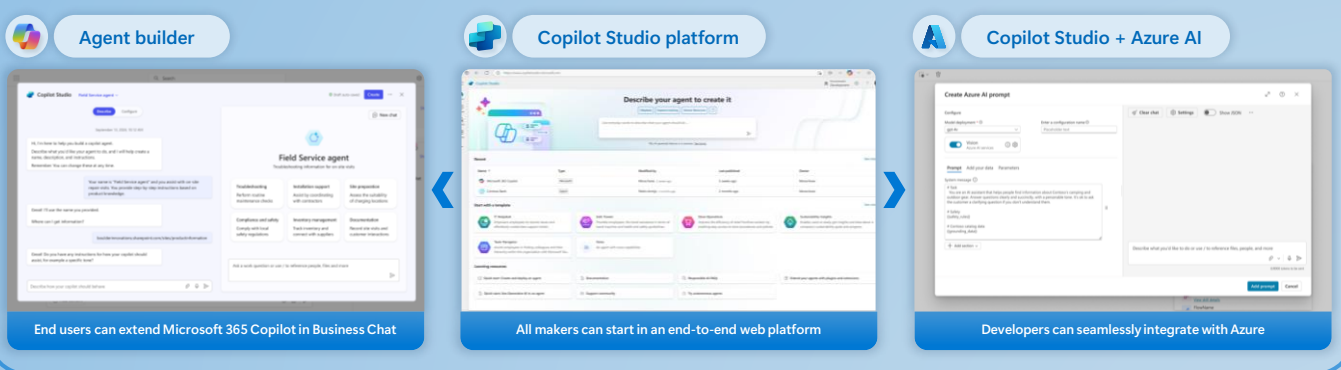


Build your own network of agents

A secure, trusted platform

- No infrastructure management
- Granular governance controls
- Enterprise data protection
- Streamlined lifecycle management

Microsoft Copilot Studio



Get started today
aka.ms/copilotstudio

* Access this channel by connecting to an ISV